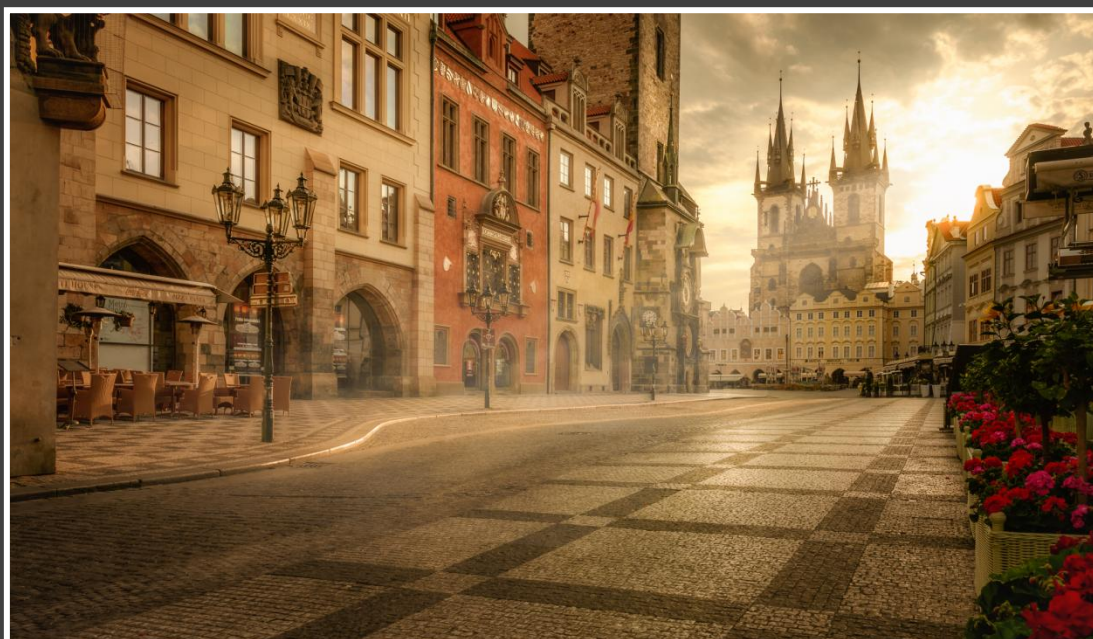


PRAGUE SIGHTSEEING TOURS



PRAGUE SIGHTSEEING TOURS

-  **PRG 001** **Prague Panoramic Tour**
-  **PRG 002** **Prague Artistic Tour**
-  **PRG 003** **Prague Jewish Quarter**
-  **PRG 004** **The Lesser town and Palace Gardens**
-  **PRG 005** **Prague Art Nouveau**
-  **PRG 006** **Vltava River Cruise**
-  **PRG 007** **Prague ZOO**
-  **PRG 008** **Unusual Prague**
-  **PRG 009** **Prague by night and dinner in New Town brewery**
-  **PRG 010** **Prague by night with dinner and Black Theatre**
-  **PRG 011** **Prague - Magical Vyšehrad**
-  **PRG 012** **Troja Castle and the Botanic Garden**

PRG 01/ PRAGUE PANORAMIC TOUR

The Prague Panoramic city tour is a good introduction of the historical city centre of Prague.

Join us for a guided walk through the cobbled streets of the **Old Town** and the **Jewish Quarter**. Our tour begins in the Old Town, where we explore the most important places, learning the history of the buildings and hearing some fascinating tales of the people who lived and worked in them. We include in our tour the Gothic **Týn Church**, picturesque **Ungelt**, **St. Jacob's Church** - where kings' weddings took place, **Carolinum** - the oldest University in Central Europe, the **Klementinum**, the stunning **Art Nouveau Municipal House**, the **Powder Gate** and the **Estates Theatre**, where Mozart performed his famous opera "Don Giovanni" in 1787.

Duration: 4 hours

Includes: Guide

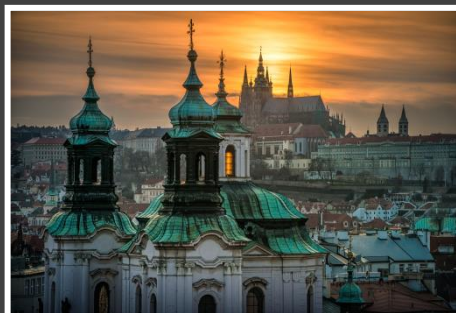


PRG 02/ PRAGUE ARTISTIC TOUR

A walking tour through the **Prague Castle complex** - national historic landmark and the seat of the President of the Republic. The tour will make you admire the grandeur of **Saint Vitus Cathedral**, the ancient architecture of the **Old Royal Palace**, **Loreta church**, **Strahov Monastery** and enjoy stunning views over the whole of Prague. En-route, we learn the origins of one of the best preserved medieval cities in the world.

Duration: 4 hours

Includes: transportation from hotel on tour, guide services, entrance fees St. Vitus Cathedral, Old Royal Palace, Golden street, Loreta, Monastery of Strahov

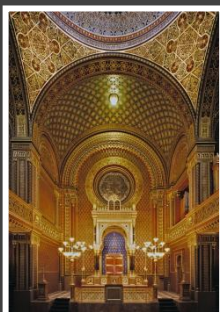


PRG 03 / PRAGUE JEWISH QUARTER

The Prague Jewish Quarter Walking Tour traces the history of what was once the largest **Jewish ghetto** in Europe. This moving story embraces the traditions, customs and legends of the Jewish people in Prague, from their early settlements in the 10th century, through the poverty of the pogrom refugees, their successes and their enforced isolation. You will entry to the **JEWISH MUSEUM -The Maisel Synagogue, The Spanish Synagogue, The Pinkas Synagogue, The Old Jewish Cemetery, The Klausen Synagogue, The Ceremonial Hall.**

Duration: 4 hours

Includes: Transportation from hotel on tour, guide services, entrance fees Jewish Museum.

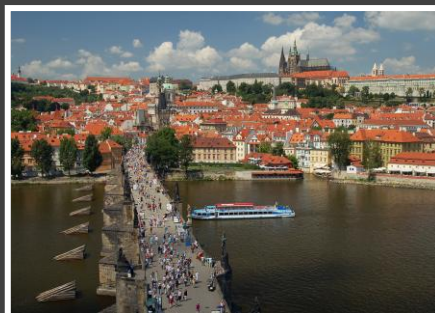


PRG 04 / THE LESSER TOWN AND PALACE GARDENS

This walking tour starts from the picturesque Lesser Town (Malá Strana). Leaving the Újezd street you stop in the Church of Our Lady of Victory you will see the famous Infant Jesus of Prague. In the streets of Malá Strana you discover many romantic places, visit the John Lennon wall, street art wall dedicated to ideas and personality of the famous singer. Continue your walk around Čertovka and Kampa Park under the Petřín hill. In recent years, Lesser Town has undergone several extensive renovations, including the beautiful palace gardens. We will visit one of them - either Vrtbovská garden or Fürstenberg Gardens or Wallenstein Gardens.

Duration: 4 hours

Includes: Transportation from hotel on tour, guide services, entrance fees into one of the Palace Gardens.



PRG 05 / PRAGUE ART NOUVEAU

During this sightseeing tour, the clients will learn more about Art Nouveau monuments in Prague. The tour begins at Mucha Museum. Alfons Mucha is a heavily influential Art Nouveau artist known for his famous series of 20 art pieces all together known as "Slavic Epic". The tour continues by walking presentation of the most famous Art Nouveau and Cubist monuments (Municipal House, the House of the Black Madonna etc.). At the end of the tour, the clients are brought to the famous Art Nouveau Prague restaurant "Café Imperial", where the lunch is served.

Duration: 3 hours tour / 1 hour lunch

Includes: transportation from hotel on tour, Guide services, Mucha Museum entrance fee and 3 course lunch with coffee and 1 drink in Café Imperial.



PRG 06 / VLTAVA RIVER CRUISE

Discover the most important monuments from the board of a boat. The cruise starts in the historic centre under the Čechův Bridge and during its two-hour cruise it takes you around other Prague bridges, Prague Castel, National Theatre, the Emauzy monastery, the rocks and fortification Vyšehrad. The cruise includes a coffee break (coffee or tea, 1 soft drink and cake). After the cruise there will be a free time in the city centre.

Duration: 2 hours

Includes: Guide services, 2 hours river cruise with coffee break (coffee/ tea/ soft drink and cake). Can be realized as night trip with dinner included

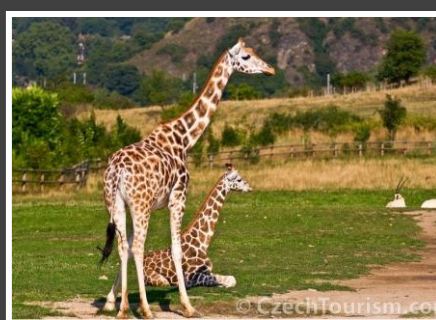
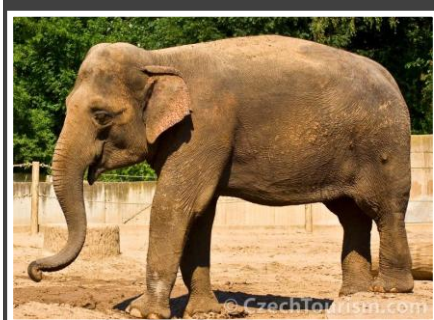


PRG 07 / PRAGUE ZOO

Throughout the last decade, Prague ZOO has been regularly elected among the TOP 10 ZOOS around the world. It has been founded in 1881 and shows as the historic features as the modern client services. The zoo itself gained a lot of fame and recognition for its successes in reproduction of endangered species such as gorilla or Przewalski horse. Visit some recently opened pavilions such as Sichuan or African.

Duration: 6 hours

Includes: transportation from hotel on tour, ZOO entrance fee, 3 hours of guide services, free time in the ZOO



PRG 08/ UNUSUAL PRAGUE

A tour prepared for all the lovers of engineering and fans of modern buildings. The tour brings the client to **the National Technical Museum**, a paradise for all those interested in science and technology. The tour continues to the Museum of Transportation of the capital Prague. The clients can contemplate both the historic and modern trams and basically shows all the evolution of Prague's transportation.

The last stop of the tour is the **TV tower Žižkov**, which is one of the dominant features in Prague and also the highest building in Prague. 216m-high tower was built between 1985 and 1992 by architects Václav Aulický and Jiří Kozák.

Duration: 5 hours

Includes: transportation, guide services, 3 entrance fees



PRG 09/ PRAGUE BY NIGHT WITH THE DINNER IN NEW TOWN BREWERY

Very popular night-time city tour, during which you will pass around the most famous places in Prague. Evening will see Old Town Square with the Astronomical Clock, but also beautifully lit Wenceslas Square. A short walk will end at the renewed **New Town Brewery Restaurant** where you can contemplate a process of the beer production and taste Novoměstský lager brewed in the brewery.

Duration: 3 hours tour / 2 hours dinner

Includes: Transportation from hotel on tour, guide services, 3 course dinner with coffee and 1 drink in New Town Brewery



PRG 10 / PRAGUE BY NIGHT WITH DINNER AND ENTRANCE TO BLACK THEATRE

If you want to experience something special and purely "Czech" you must visit world famous Black theatre performances. It offers several performances, but the well-known and the most popular is the performance of **Alice in Wonderland in Ta Fantastika Theatre**. Guide will briefly introduce you Lesser Town and Charles Bridge, from where you will see beautifully illuminated Prague Castle. Then you will continue to one of the finest luxury restaurants where you will taste typical Czech cuisine, but in modern way. After remarkable dinner performance of the Black Theatre awaits you.

After the performance Minibus will pick you up on the agreed meeting point, and transfer you back to the hotel.

Duration: 6 hours

Includes: Transportation from hotel on tour, guide services, 3 course dinner with 1 drink in deluxe restaurant, entrance fee to the Black theatre



PRG 11 / PRAGUE - MAGICAL VYŠEHRAD

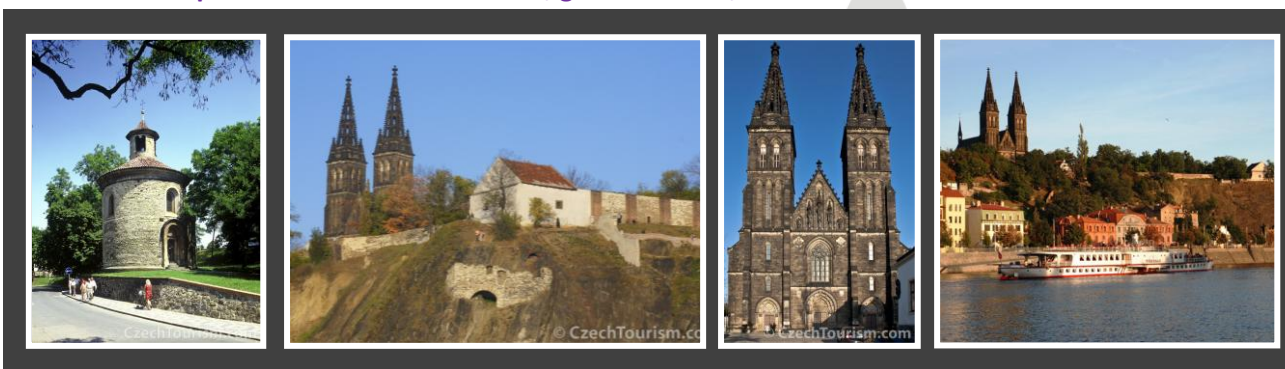
The magical atmosphere of Vyšehrad Fortress attracts all those interested in historical myths, fairy tales and magic.

Praha - Vyšehrad has been mentioned in the old Bohemian mythology. Stories about the mythical princess Libuše, who prophesied the future glory of Prague from her seat in Vyšehrad, a mythical horse Šemík who jumped from Vyšehrad rock, about brave Bivoj, or girls' War. Vysehrad tales explain and celebrate the origins and early years of the state of the noble family of Přemyslovci.

The tour includes entrance to the entire complex, i.e. the Old Burgrave, Gothic cellar, casemates, the Basilica of St. Peter and Paul and the Vyšehrad cemetery - Slavín, place where nearly 600 figures of Czech history, culture and education are buried.

Duration: 4 hours

Includes: Transportation from hotel on tour, guide services, entrance fee

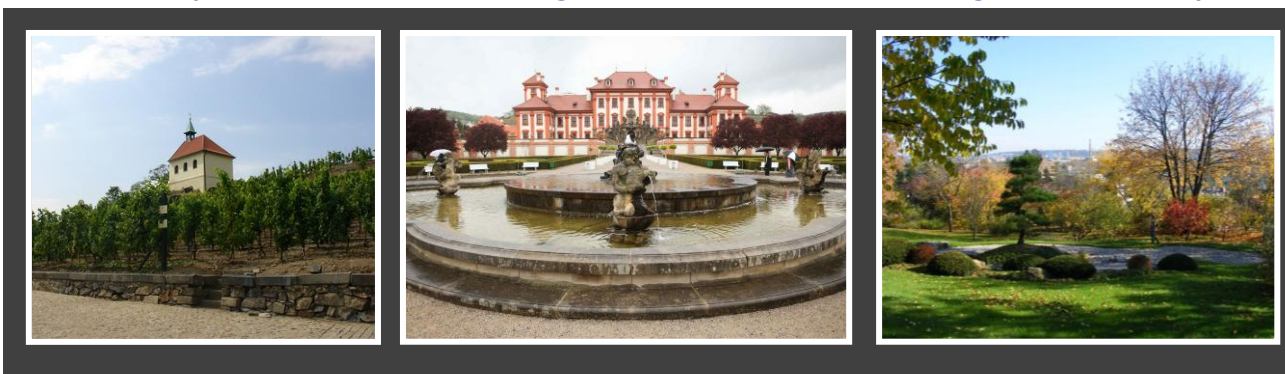


PRG 12 / TROJA CASTLE and THE BOTANIC GARDEN

Troja Castle - the pearl of High Baroque in Prague, has been designed by the Italian architect Jean Baptist Mathey and has been built by architect Giovanni Domenico Orsi de Orsini in the 17th century for the Earl of Šternberk. You will walk through the magnificent halls with Baroque frescoes and statues. The dominant feature of the castle is the Imperial Hall. The castle hosts an exhibition of Czech painting of the 19th century; it is also worth visiting lavish castle gardens. After the castle visit, we continue to the inseparable part of Troja; it's **Botanic Garden**, which covers 30 hectares of exposition areas and includes tropical greenhouse **Fata Morgana**, the historical winery **St. Klára** and meditation **Japanese garden**. The tour is ended by a stop in winery.

Duration: 6 hours

Includes: transportation from hotel on tour, guide services, 2 entrance fees, degustation in winery



The photos have been acquired from the Czech Tourism photo bank and Prague City Toursim.

Photos:

PRG 01, PRG 02, PRG 03, PRG 04, PRG 06 - ©Prague City Tourism

PRG 05 (hotel Imperial), PRG 07, PRG 08, PRG 09, PRG 11, - Czech Tourism

PRG 12 Botanic garden

